

# APL Solar control unit

## TECHNICAL FEATURES



### Description

Control unit of the APL Solar systems.

### BATTERY FEATURES

Type	AGM lead
Rated voltage	12 Vdc
Rated capacity	90 Ah
Battery weight	30 Kg

### PHOTOVOLTAIC KIT FEATURES

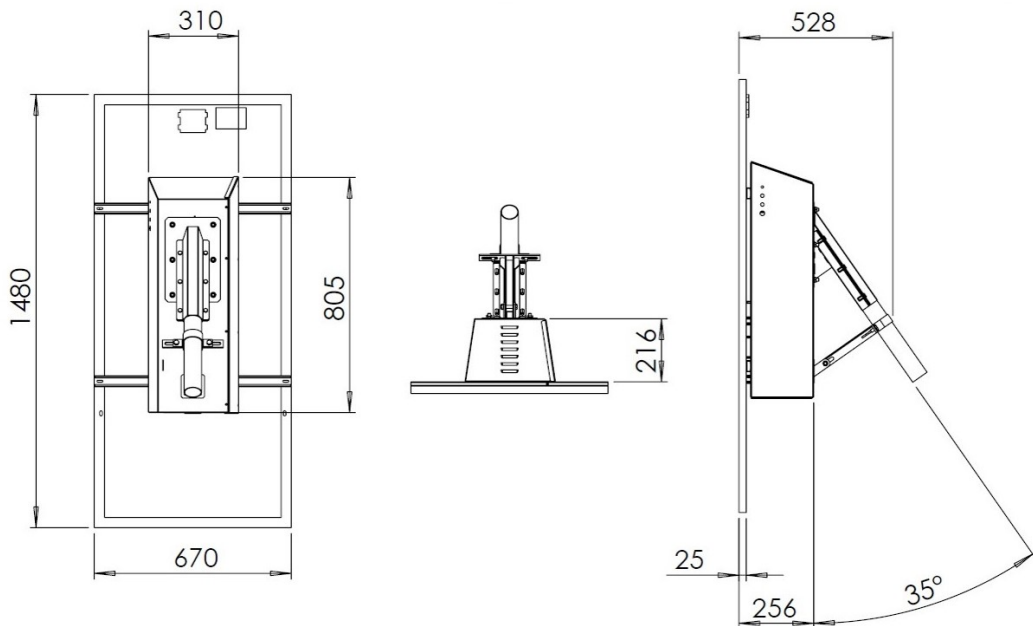
Type	36 Cells monocrystalline silicon
Peak power	190 W
Photovoltaic panel dimensions	1480 x 670 x 35 mm
Cabinet dimensions	310 x 805 x 216 mm

### CHARGE CONTROLLER FEATURES

Charging technology	PWM	
Maximum charging current	20 A	
Protection block download	11,5 Vdc (Disconnected load)	12,6 Vdc (Reconnected load)

### GENERAL FEATURES

Current consumption(@12,8 V)	2,1 A
IP Protection degree	IP65
Color	Akzo Nobel 900 Gris sablé
Total weight	57 Kg
Operating Temperature	-25 °C ÷ 50 °C
Insulation class	Class III
Fixing	Head-pole Ø90 mm



Rev. 3.0  
11/09/2023

Approved TEC

Approved AQ