

APL Solar Active control unit

TECHNICAL FEATURES



Description

Wireless control unit of the APL Solar Active systems.

BATTERY FEATURES

Type	AGM lead
Rated voltage	12 Vdc
Rated capacity	90 Ah
Battery weight	30 Kg

PHOTOVOLTAIC KIT FEATURES

Type	36 Cells monocrystalline silicon
Peak power	190 W
Photovoltaic panel dimensions	1480 x 670 x 35 mm
Cabinet dimensions	310 x 805 x 216 mm

CHARGE CONTROLLER FEATURES

Charging technology	PWM
Maximum charging current	20 A
Protection block download	11,5 Vdc (Disconnected load) 12,6 Vdc (Reconnected load)

WIRELESS CABINET FEATURES

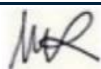
Module communication system	Wireless
Frequency	868 MHz
Maximum distance between modules	50 m
Activation type	Timed
Setting	Manual with potentiometer (8 ÷ 25 seconds)
Material	Painted metal
IK code	IK10
Dimensions	240 x 280 x 113 mm

GENERAL FEATURES

Current consumption(@12,8 V)	2,5 A
IP Protection degree	IP65
Color	Akzo Nobel 900 Gris sablé
Total weight	68 Kg
Operating Temperature	-25 °C ÷ 50 °C
Insulation class	Class III
Fixing	Head-pole Ø90 mm (Photovoltaic Kit); Band-it (Wireless Cabinet)

Rev. 3.0

11/09/2023

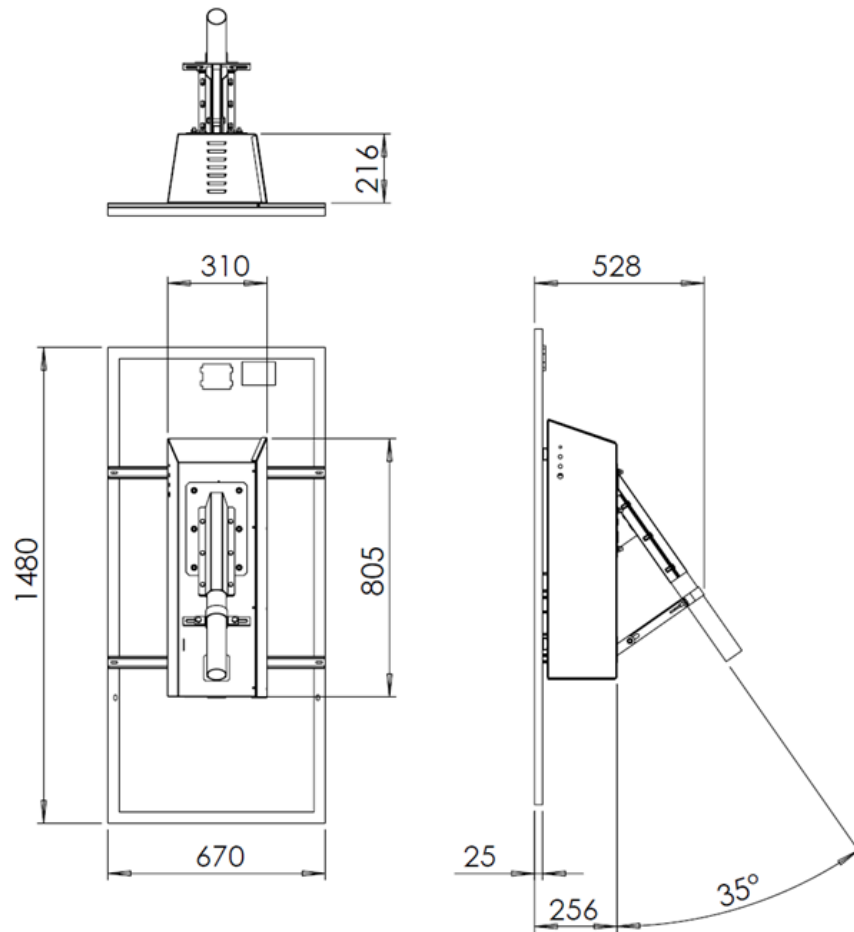


Approved TEC

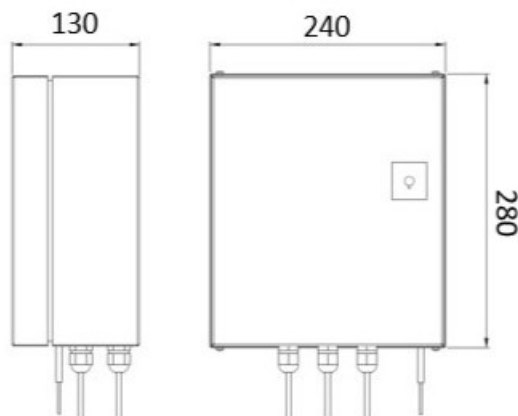


Approved AQ

KIT FOTOVOLTAICO/PHOTOVOLTAIC KIT



ARMADIO WIRELESS/WIRELESS CABINET



Rev. 3.0
11/09/2023

Approved TEC

Approved AQ