

TECHNICAL FEATURES



Description

The SL19 model is completely foldable, and allows you to place the traffic light inside the cart. Usable with Dual and MPB control unit.

OPTICAL FEATURES

Light source	LED	
Optics	Single sided	
Colour	Green - Amber - Red	
Lamps diameter	3xBasic211 (standard version)	3xBasic201 (high visibility version)
Optic lifetime	> 50,000 hours	

ELECTRICAL FEATURES

Power supply	12 Vdc (11 ÷ 15 Vdc)	
Power consumption	3 W	7.8 W
Insulation class	Class III	

MECHANICAL FEATURES

Operating temperature	-10°C ÷ +55°C	
LED lamps IP protection Degree	IP65	
Cart IP protection Degree	IP54	
Weight	25 Kg (without battery)	
Dimensions (Open)	1880 x 780 x 440 mm	
Dimensions (Closed)	780 x 410 x 440 mm	
Adjustable height	1630/1755/1880 mm	
LED lamps materials	Polycarbonate (Lens); PA6 (Body)	
Cart material	Painted galvanized steel	

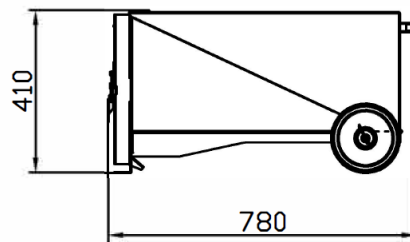
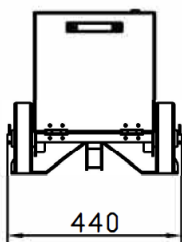
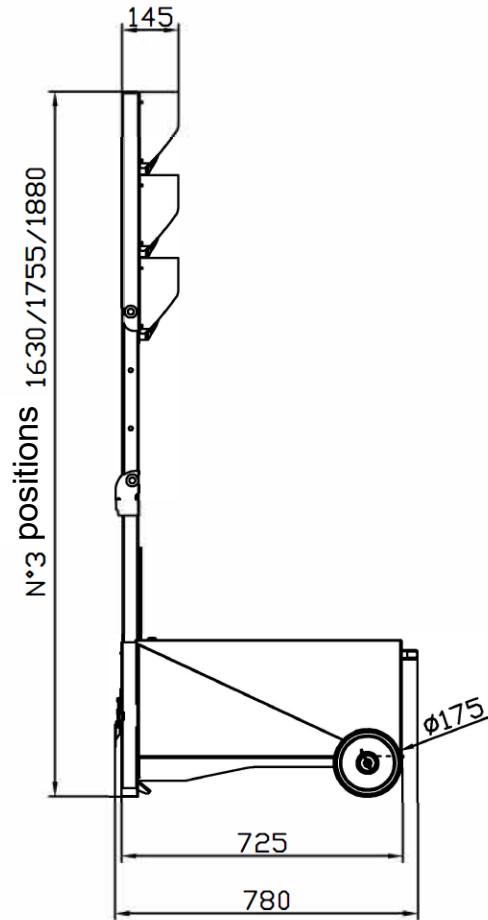
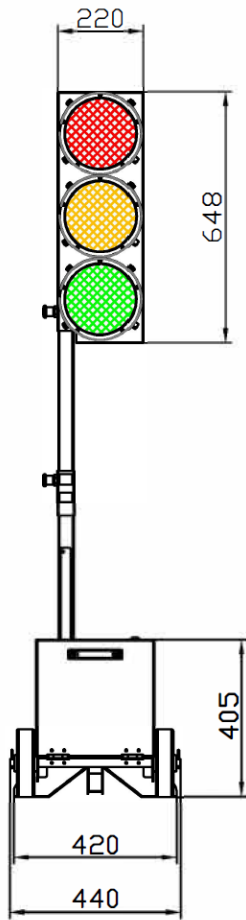


Rev. 1

29/09/2023

Approved TEC

Approved AQ



Rev. 1
29/09/2023

Approved TEC

Approved AQ